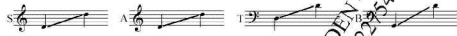


ER IS DAS LICHT

Im Licht des Herrn

Words: Martin Zonnenberg Original title: In the light of God Dersetzung: Birgit Paulusma

Music: Martin Zonnenberg



Musical score for the first system, including vocal line and piano accompaniment with chords G:D, D:C, G:D, G, E:C, G.

Musical score for the second system, including vocal line and piano accompaniment with chords G, G7/B, C, C#E, G, D/F#.

© Unison Music Publishers, Hilversum, Holland Duration 1'55 Reproduction of this publication without permission of the publisher is a criminal offense subject to prosecution ECC17.0428.03D

Musical score for the third system, including vocal line and piano accompaniment with chords G, D, A=C, D, A=C, B=b, A=b, C.

Musical score for the fourth system, including vocal line and piano accompaniment with chords G, G/B, C, C#E, C, G:D, D#.

Musical score for the fifth system, including vocal line and piano accompaniment with chords E=b, G, C, G, G, C.

Musical score for the sixth system, including vocal line and piano accompaniment with chords G, C#D, G, D/F#, E=b, G:D.

Musical score for the seventh system, including vocal line and piano accompaniment with chords A=C, A, D, A=b, B=b, A=b, G, A#D, C, E=b.

Musical score for the eighth system, including vocal line and piano accompaniment with chords A=b, C, G:D, B7/D#, D7, G, C, G, C.

Musical score for the ninth system, including vocal line and piano accompaniment with chords G:D, G/B, D7, G, G/B, E=b, A=b, D#.

Musical score for the tenth system, including vocal line and piano accompaniment with chords G, D, A=C, D, A=C, B=b, A=b, C.

Musical score for the eleventh system, including vocal line and piano accompaniment with chords G, G/B, C, C#E, C, G:D, D#.

Musical score for the twelfth system, including vocal line and piano accompaniment with chords E=b, G, C, G, G, C.

Musical score for the thirteenth system, including vocal line and piano accompaniment with chords A=b, A=b, D#, A=b, A=b, F=b, A=C.

Musical score for the fourteenth system, including vocal line and piano accompaniment with chords E=b, B#D, E=b, B#D-C#, A=b, D#, A=b, A=C, D#.

Musical score for the fifteenth system, including vocal line and piano accompaniment with chords A, A#B, C#E, F#b, E=b, A=b, D#, A#.