

CHRIST THE LORD IS RISEN TODAY

words and music

Lyra Davidica and Rob Howard

arrangement
Rob Howard

Duration 3'16
ECC17.0093.01E



P.O. Box 9185 phone: +31 (0)78 622 75 47
NL 3301 AD Dordrecht email: info@europeanchoralclub.com
The Netherlands internet: www.europeanchoralclub.com

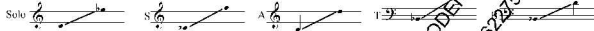
P.O. Box 9185 phone: +31 (0)78 622 75 47
NL 3301 AD Dordrecht email: info@europeanchoralclub.com
The Netherlands internet: www.europeanchoralclub.com



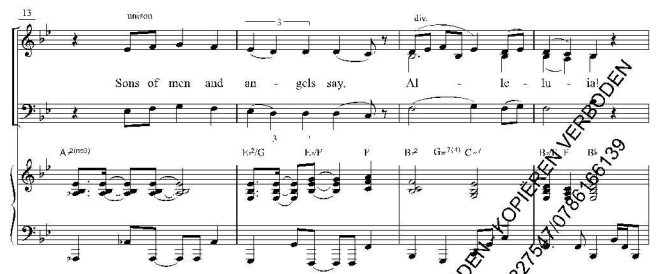
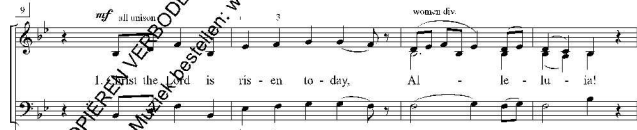
CHRIST THE LORD IS RISEN TODAY

Words: Charles Wesley

Music: Lyra Davidica and Rob Howard
Arr.: Rob Howard



With motion (♩ = ca. 116-118)
N.C.



ia!

C⁷ C⁷/E F F#m C/G G#m⁷ A^m E⁷E D⁷/F C/G D⁷G C/G D⁷F C F/C

1st time solo
2nd time all div

2. Lives a - gain our glo - rious King, le - lu - ia!
3. Love's re - deem - ing work is done, le - lu - ia!

C G#m⁷ F F#m⁷ C/G G C⁷/E F F#m⁷ C/G G C F/C

Where O Lord, now your sing! Al - le lu - ia!
Fought the fight, bat - tle's won, Al - le lu - ia!

C G⁷/E F C/G G C C⁷/E F F#m⁷ C/G G C

Dy - ing once He all doth save, Where's your vic - to - ry, o gra -
Death in vain for - bids Him rise, Christ has o - pened Par - a -

G⁷ C/G G⁷ G⁷/F C/E D⁷ C C⁷/E G⁷ C/G G⁷ G⁷/F D⁷ F D⁷/G

Al - le lu - ia! le - lu - ia!

C C⁷/E F F#m⁷ C/G G#m⁷ A^m F#m⁷ D⁷/F C/G D⁷G C/G D⁷G C F/C

lu - ia!
As the Lord is ris - en, Christ the Lord is ris - en to - day!

D⁷ C F/C C G#m⁷ F⁷ B⁷/F F/G C G#m⁷ F C/G D⁷G

Original: Choir clap on beat 2 and 4
all div

4. Soar we now where Christ has led, Al - le lu - ia!
Al - le lu - ia!

D A^m/F⁷ G D/A A D D⁷/F⁷ G G#m⁷ D/A A D

Fol - lowing our ex - alt - ed Head, le - lu - ia!

D A^m/F⁷ G D/A A D D⁷/F⁷ G G#m⁷ D/A A D

Made Him rise, Ours the cross, the grave, the skies.

A⁷ D/A A⁷ A⁷/G D/F# E^m D A⁷ D/A A⁷ A⁷/G F#F⁷ E^m/G D/A E^m/A

Al - le lu - ia! Al - le lu - ia!

D D⁷/F⁷ G G#m⁷ D/A A#m⁷ B^m F#m⁷ F#m⁷ D/A E^m/A D/A

(no claps)
all unison

Christ the Lord is ris - en to - day. Al - le lu - ia!

D G/D F#m⁷ G D/A D/A D/A E^m/A D/A A⁷ F#m⁷ D/A E^m/A

ia! Al - le lu - ia!

D D⁷/F⁷ G G#m⁷ D/A A#m⁷ B^m F#m⁷ F#m⁷ D/A E^m/A D/A E^m/A D