

GO TELL IT!

words and music

John W. Work and Based on the African-American Spiritual

arrangement

Jack Schrader

Duration 3'01

ECC17.0164.01E



P.O. Box 9185 phone: +31 (0)78 622 75 47
 NL 3301 AD Dordrecht email: info@europeanchoralclub.com
 The Netherlands internet: www.europeanchoralclub.com

P.O. Box 9185 phone: +31 (0)78 622 75 47
 NL 3301 AD Dordrecht email: info@europeanchoralclub.com
 The Netherlands internet: www.europeanchoralclub.com



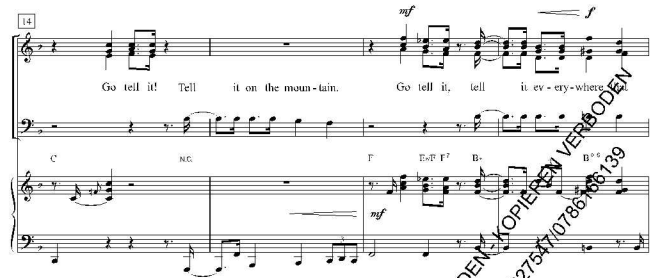
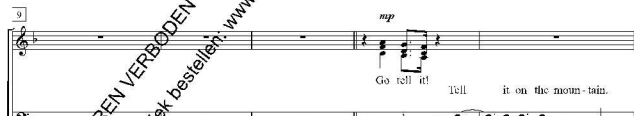
GO TELL IT!

Words: John W. Work

Music: Based on the African-American Spiritual
 Arr: Jack Schrader



Medium Stride Tempo (♩ = ca. 120)



27 *mf*

Je - sus Christ is born! Go tell it! Tell it on the moun - tain

Je - sus Christ is born!

F/C G/C C7 F#C C B/F A/G F G/C F#C

32

Go tell it! Tell it on the moun - tain. Go tell it, tell it ev - ery - where that

C F/C C#C G/C F#C F/A B G/Ab Bb

36 *tempo remains constant*
mp legato

Je - sus Christ is born! 't Was in a low - ly man - ger the

F/C C7 F B/F# A/G# C# F/D C/E F B/F F

43

hum - ble Christ was born; and God sent us sal - va - tion, that bless - ed Christ

F B/F F F/D E/C

48 *mf* *allegro rit.* *rit.* *al tempo*

nom. it on the moun - tain,

C A#7C D#B C/B C#7 F#D B#7 F#C C#7 F#

52 *mf*

o - ver the hills ev - ery - where. Go, tell it on the moun - tain that

Bb7 D#B A#D E-13 A7 A7/C F#D B#7F A- A#G F# F#7

56 *mf*

Je - sus Christ is born! Go tell it! Tell it on the moun - tain!

Bb7# A#7/B# D#7 A# AM/E D#6 B#7C D#7/B A#7#

66

it on the moun - tain! Go tell it! Tell it on the moun - tain! Go tell it, tell

A# A#C D# A#E- E-9 A#C D#-D D#E- A# G#B A#7C D#

69 *mf*

it ev - ery - where Je - sus Christ is born. Go tell it, tell

Bb-D D7 A#E B#7D E7 A- D# A#C B# B#7 B#7D A#F E#G A-

69 *mf*

it on the moun - tain. Go tell it, tell it on the moun - tain! Go tell it,

D#F D# A- D#m E7 A- F#C

73 *f* *(non rit. to end)*

Go tell it that Je - sus Christ is born,

D# B#7 A#B A# A#B# 9#7# 9#7# 9#7# A-

77

Je - sus Christ is born! Christ is born!

D# E7 A- B# D# E7 A#