

LORD MOST HIGH

words
&
music

Don Harris & Gary Sadler

Arrangement

Barry Parks

Duration 3'23
ECC17.0387.01E



P.O. Box 9185 phone: +31 (0)78 622 75 47
NL 3301 AD Dordrecht email: info@europeanchoralclub.com
The Netherlands internet: www.europeanchoralclub.com

P.O. Box 9185 phone: +31 (0)78 622 75 47
NL 3301 AD Dordrecht email: info@europeanchoralclub.com
The Netherlands internet: www.europeanchoralclub.com



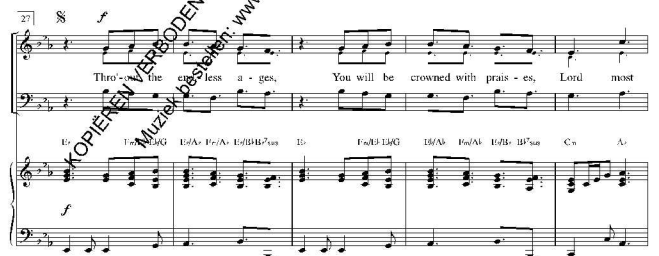
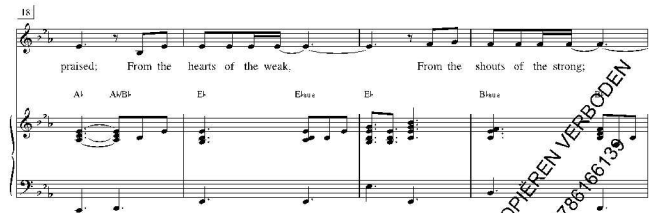
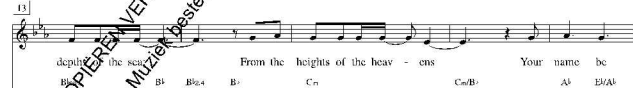
LORD MOST HIGH

Words: Don Harris & Gary Sadler

Music: Don Harris & Gary Sadler
Arr: Barry Parks



Lightly (♩ = ca. 62)
n.c.



32

high; Ex-ult-ed in ev-ry na-tion. Sov-erign of all cre-a-

B7(b9) B: E: E7(b9)F#G E7(A) F#G/A E7(B)B7sus E: E7(b9)F#G E7(A) F#G/A E7(B)B7sus

37

Lord most high, be mag-ni-fied! from the

2nd time to Coda *mf* *worchen antiken*

Cm A- B7sus 2nd time to Coda A: B7(b9) B7(b9) A- B7(A) A7 B7(A)

decresc.

43

ends of earth, From the depths of the sea;

from the ends of the earth, From the

E7sus E: B7sus B:

mf

46

From the heights of the heav-ens Your name

depths of the sea; From the heights of the heav-ens

B7sus Cm C7(b9) C7(b9)

50

praised; From the hearts of the weak, From the

From the hearts of the weak,

A: A7(b9) B7(b9) E7(b9) B:

53

shouts of the strong; From the lips of all peo-ple.

From the shouts of the strong; From the

B: B7(b9) B7(b9) B: C7:

56

This song we praise, Lord!

lips of all peo-ple.

C7(b9) A- E7(A) A- B:

D.S. al Coda

59

fied, Mag-ni-fied. We ex- You, Lord most high!

A- B7(A) A7 B7(A) A: B7(b9) A7 E7G F#7 B: B- C7sus C

Code

66

Thro-ut the end-less a-ges, You will be crowned with prais-es,

F G7(b9) F/A F7(b9) G7(b9) F7C7sus F: G7(b9) F/A F7(b9) G7(b9) F7C7sus

Op. div.

71

Lord most high; Ex-ult-ed in ev-ry na-tion. Sov-erign of all cre-a-tion.

D7sus B: C7sus C: F: G7(b9) F/A F7(b9) G7(b9) F7C7sus F: G7(b9) F/A F7(b9) F7C7sus

77

Lord most high, Lord most high, Lord most high, be mag-ni-fied!

D7sus B: C7sus C: D7sus B: C7sus C: B: C7sus B: C7(b9)

all nation

84

Mag-ni-fied!

B: C7(b9) B7(b9) F: F/A C7sus G7C: F

crmo.

ff