

BEAUTIFUL ONE

Words
&
Music:

Tim Hughes

Arr.: Elisa Krijgsman

Choral Setting: Denise Timman

Duration: 4'32

ECC17.0973.01F



P.O. Box 9185 phone: +31 (0)78 622 75 47
 NL 3301 AD Dordrecht email: info@europeanchoralclub.com
 The Netherlands internet: www.europeanchoralclub.com

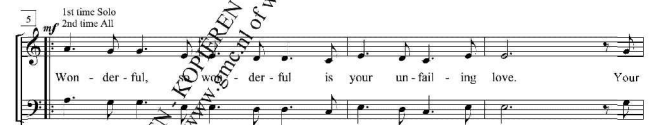
P.O. Box 9185 phone: +31 (0)78 622 75 47
 NL 3301 AD Dordrecht email: info@europeanchoralclub.com
 The Netherlands internet: www.europeanchoralclub.com



BEAUTIFUL ONE

Words: Tim Hughes

Music: Tim Hughes
 Arr.: Elisa Krijgsman
 Choral Setting: Denise Timman



© 2002 Thankyou Music. For the Benelux: Small Stone Media BV, Holland

Duration: 4'32

Reproduction of this publication without permission of the publisher is a criminal offense subject to prosecution

ECC17.0973.01F



33

One my soul must sing. Beau - ti - ful

37

One I love, beau - ti - ful I a - dore, beau - ti - ful

41

One my soul must sing. Fine *mp* You o -

5

ECC17.0973.01F

45 *mp*

pend my eyes to Your won - ders a - new, You cap - tured my heart with this love. 'Cause noth -

Ooh ooh

49

ing on earth is as beau - ti - ful as You. ooh ooh You o -

53

pend my eyes to Your won - ders a - new, You cap - tured my heart with this love. 'Cause noth -

6

ECC17.0973.01F

57 *cresc.* *D.S. al Coda*

ing on earth is as beau - ti - ful as You. beau - ti - ful

61

My soul, my soul, must sing. My soul, my soul, must sing.

o capella

65

my soul must sing. beau - ti - ful One.

7

ECC17.0973.01F

69

My soul, my soul, must sing. soul,

72

my soul, must sing. soul, my soul, must sing.

75 *D.S. al Fine*

ful. One. Beau - ti - ful

8

ECC17.0973.01F